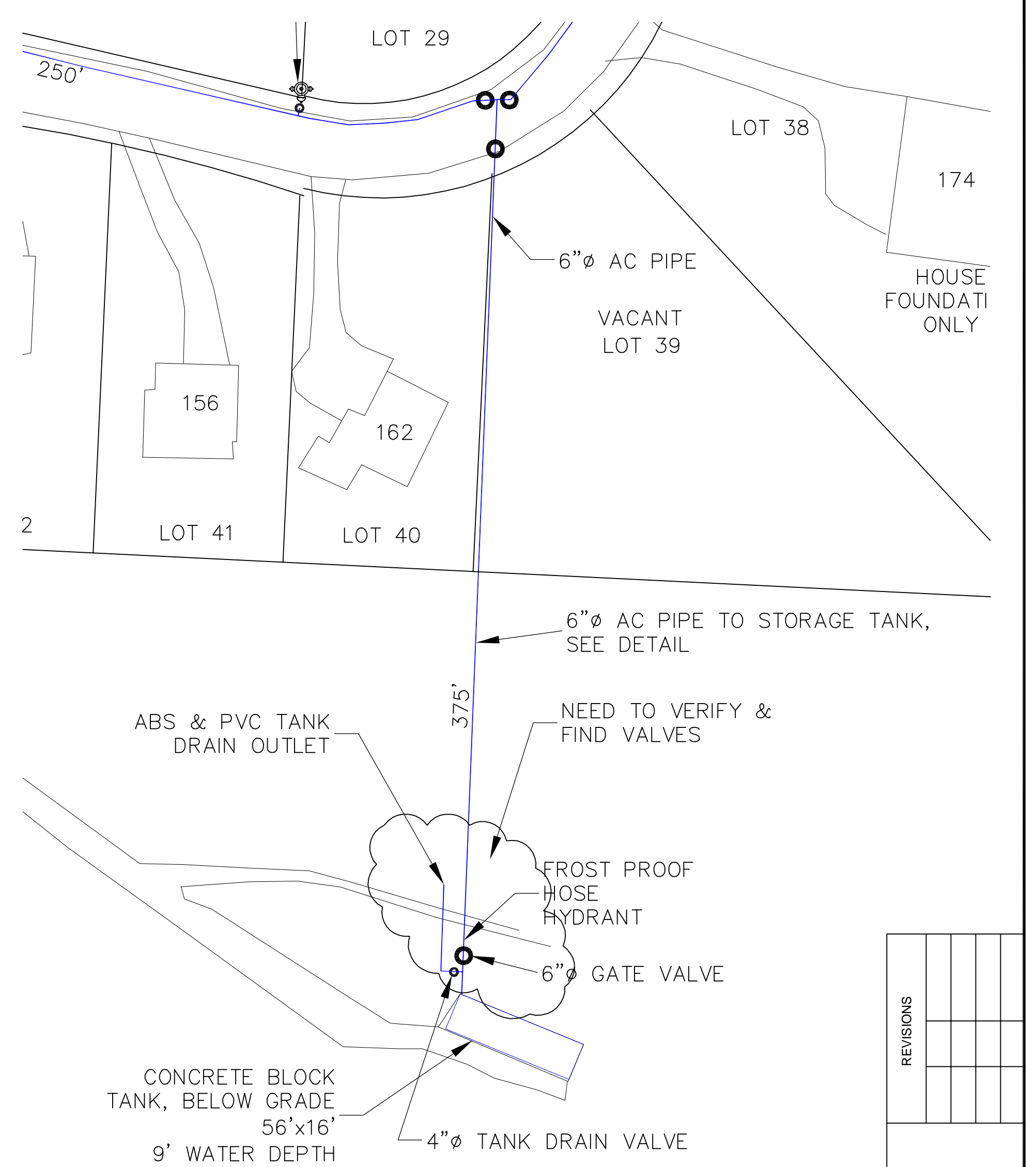
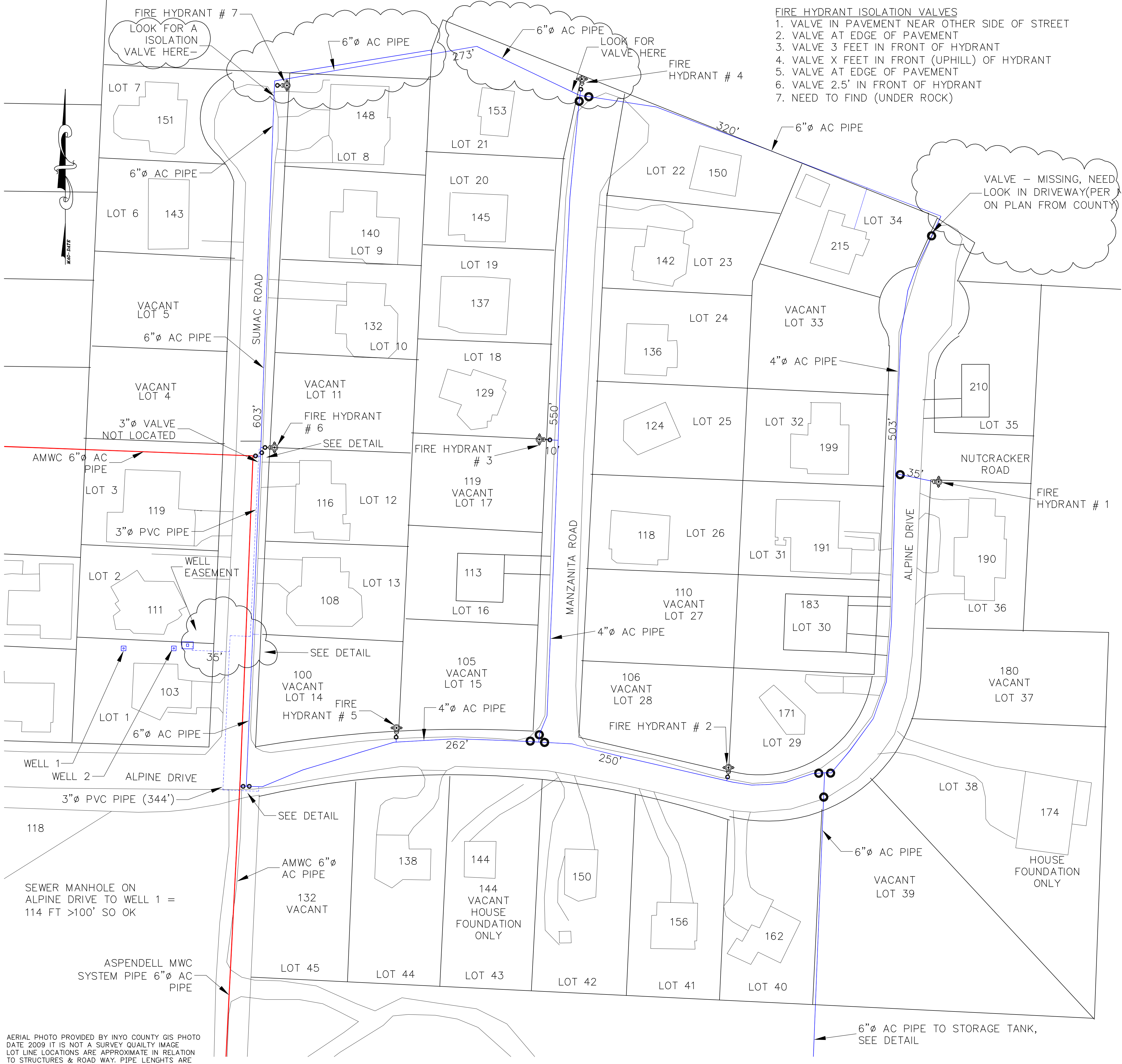
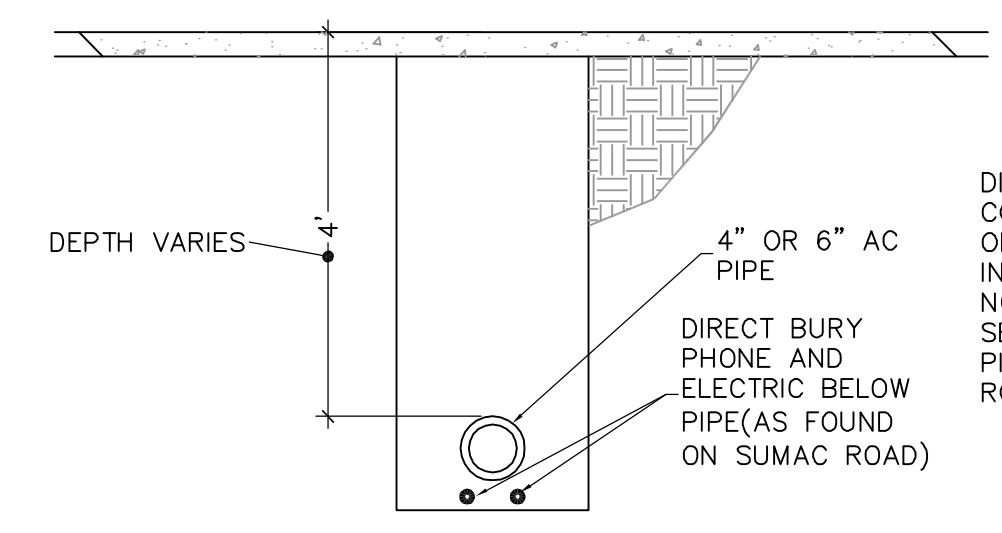


- FIRE HYDRANT ISOLATION VALVES**
1. VALVE IN PAVEMENT NEAR OTHER SIDE OF STREET
 2. VALVE AT EDGE OF PAVEMENT
 3. VALVE 3 FEET IN FRONT OF HYDRANT
 4. VALVE X FEET IN FRONT (UPHILL) OF HYDRANT
 5. VALVE AT EDGE OF PAVEMENT
 6. VALVE 2.5' IN FRONT OF HYDRANT
 7. NEED TO FIND (UNDER ROCK)



TE DEC 2023
WATERLINE TO TANK
Scale



DIRECT BURY OF UTILITIES IS COMMON IN THIS 1979 ERA OF CONSTRUCTION. UTILITY IN COMMON TRENCH IS NOTED ON PREVIOUS PLAN SET & BY OPERATOR WHEN PIPE WAS FIXED ON SUMAC ROAD.

TYPICAL COMMON UTILITY TRENCH
Scale 1/2" = 1'

- LEGEND**
- FIRE HYDRANT
 - FIRE HYDRANT VALVE
 - SYSTEM VALVE
 - BLUE: ALPINE WATER WATERLINES
 - RED: ASPENDELL MWC WATERLINES
 - SERVICE LATERAL- NO REFERENCE TO PIPE MATERIAL ON PLAN -SEE ORIGINAL PLAN FOR LATERALS

DRAFT
1-3-24 REV 1

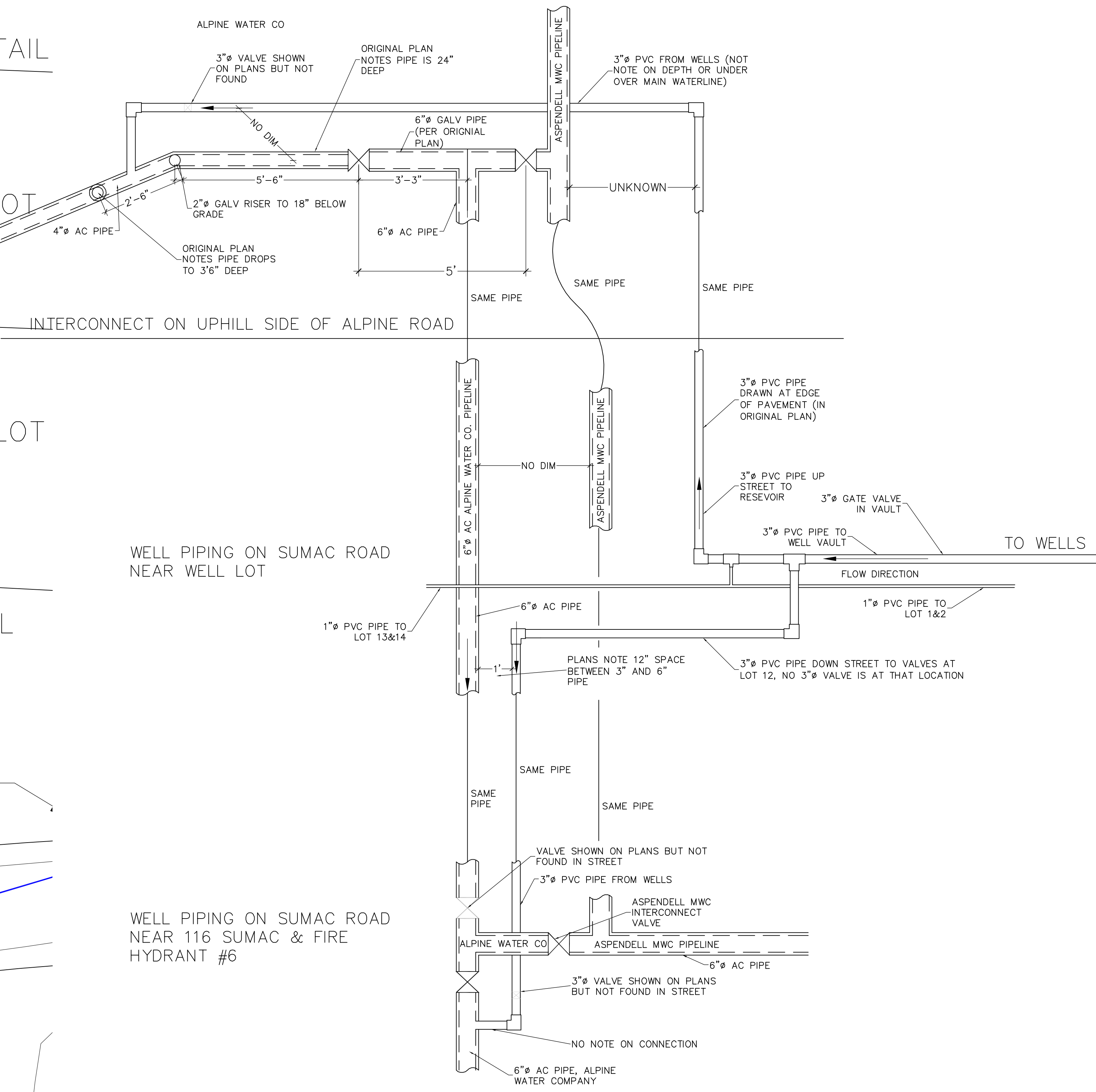
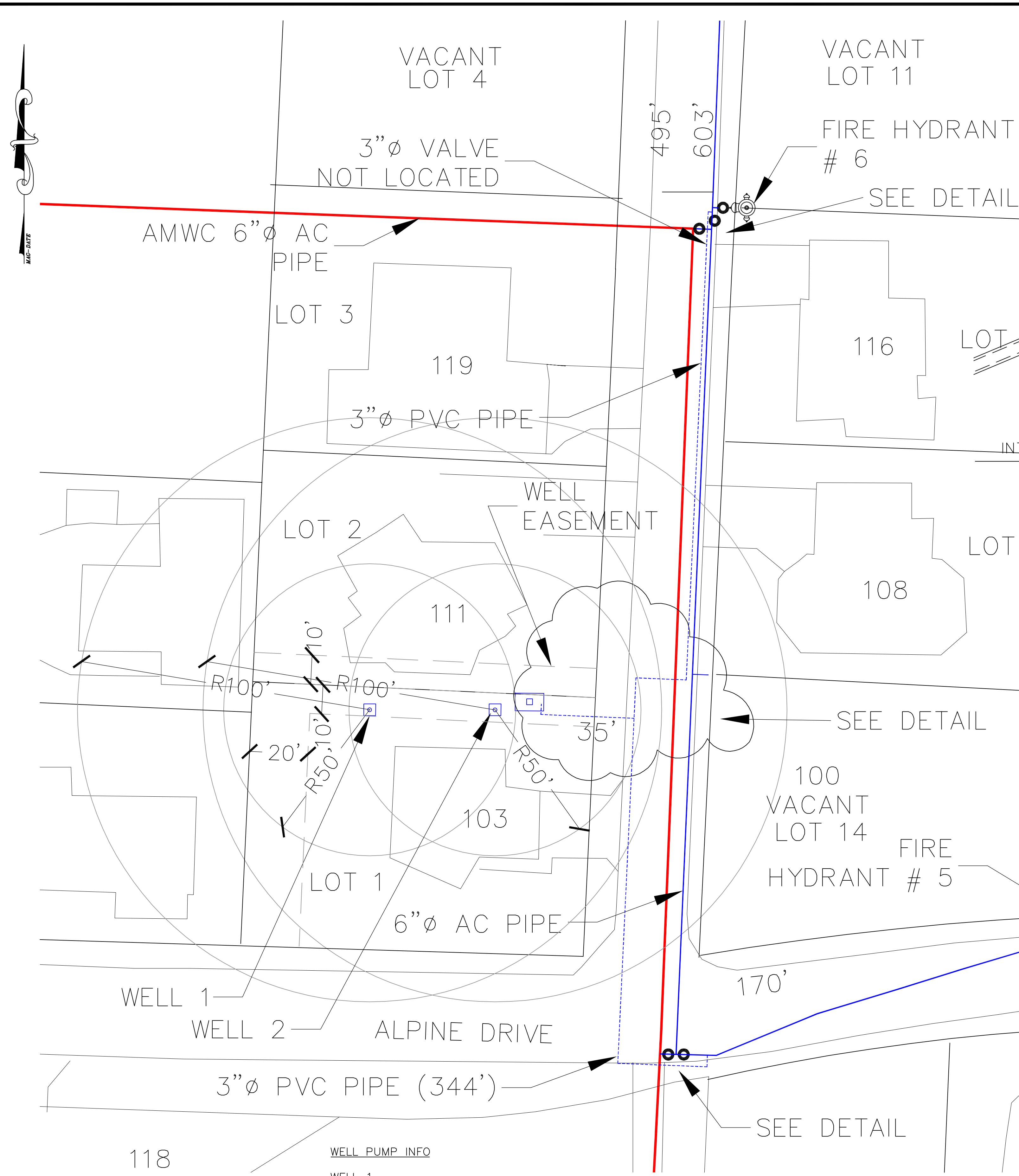
AERIAL PHOTO PROVIDED BY INYO COUNTY GIS PHOTO DATE 2009 IT IS NOT A SURVEY QUALITY IMAGE. LOT LINE LOCATIONS ARE APPROXIMATE IN RELATION TO STRUCTURES & ROAD WAY. PIPE LENGTHS ARE SKETCHED IN AND APPROXIMATE IN LENGTH. STREET ADDRESSES FROM INYO GIS DEC 2023

REVISIONS	

Tim Rudolph ENGINEERING
438 Chestnut Ave
San Marcos, CA. 92069
760 798-4292
Tim.Rudolph@cox.net

Alpine Water Company
Aspendell CA
SYSTEM MAP

1
of 2 pages



WELL 1 & 2 LOCATION

Scale: NONE

NOTES:
CIRCLES SHOW DISTANCE FROM WELLS
NEED TO VERIFY WELL EASEMENTS ON PROPERTY DEEDS

WELL PUMP INFO

WELL 1
REPLACED 10-14-2020 GRUNDFOS 25S15-9 230VAC SINGLE PHASE WITH FLOW LIMITING VALVE OF 25 GPM, TO PREVENT EXCESSIVE DRAWDOWN IN WELL
STATIC WATER LEVEL AT 38'
PUMPING WATER LEVEL 46'
PUMP SET AT 54'
BOTTOM OF WELL 68'

WELL 2
FRANKLIN ELECTRIC MODEL 2823028103 3Hp SINGLE PHASE (INFO FROM STARTER CAPACITOR BOX)
46 GPM
10' WELL EASEMENT ON EACHSIDE OF PROPERTY LINE. PER ORIGINAL PLAN, NOT CONFIRMED WITH TITLE REPORTS, NEED SURVEY TO CONFIRM HOUSE LOCATIONS RELATIVE TO EASEMENTS & PROPERTY LINES.
WELL SITE WAS NOT BUILT PER ORIGINAL PLANS

ALPINE ROAD & SUMAC ROAD SYSTEM INTERCONNECTION

Scale: NONE

NO.	DATE	REVISIONS

Tim Rudolph ENGINEERING
438 Chestnut Ave
San Marcos, CA. 92069
760 798-4292
TimRudolph@cox.net

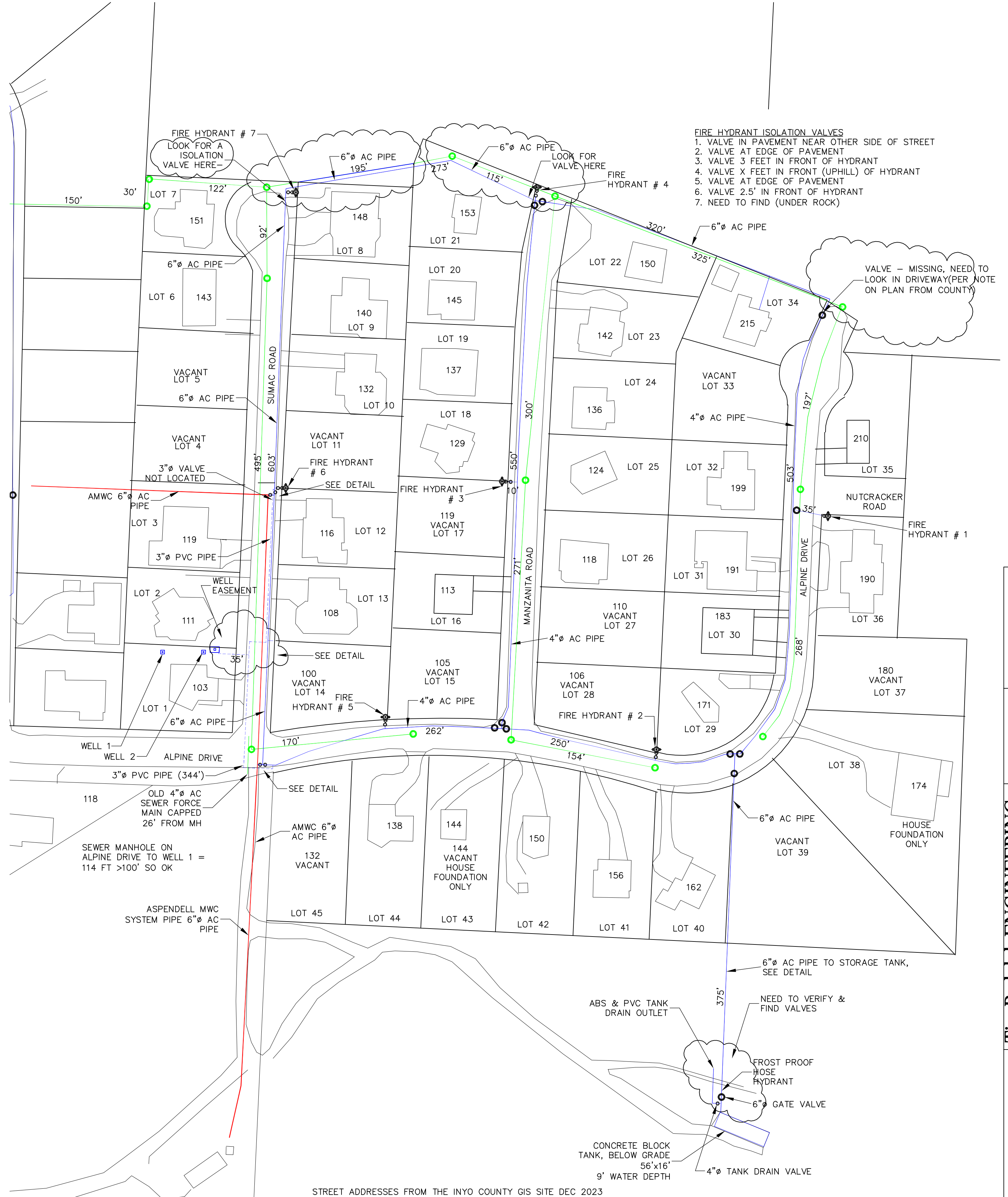
**Alpine Water Company
Aspendell CA
WELL SITE & WELL PIPING**

DATE 12-19-23

2
of 2 pages

DRAFT

1-3-24



THIS PAGE IS NOT PART OF THE PLAN— SHOWN FOR REFERENCE TO PHOTO AND TO SHOW SEWER IS ON MAP SAME DRAWING WITH AERIAL PHOTO BACKGROUND

- LEGEND**
- FIRE HYDRANT
 - FIRE HYDRANT VALVE
 - SYSTEM VALVE
 - BLUE: ALPINE WATER WATERLINES
 - RED: ASPENDELL MWC WATERLINES
 - GREEN: SANITARY SEWER
 - GREEN CIRCLE: SEWER MANHOLE

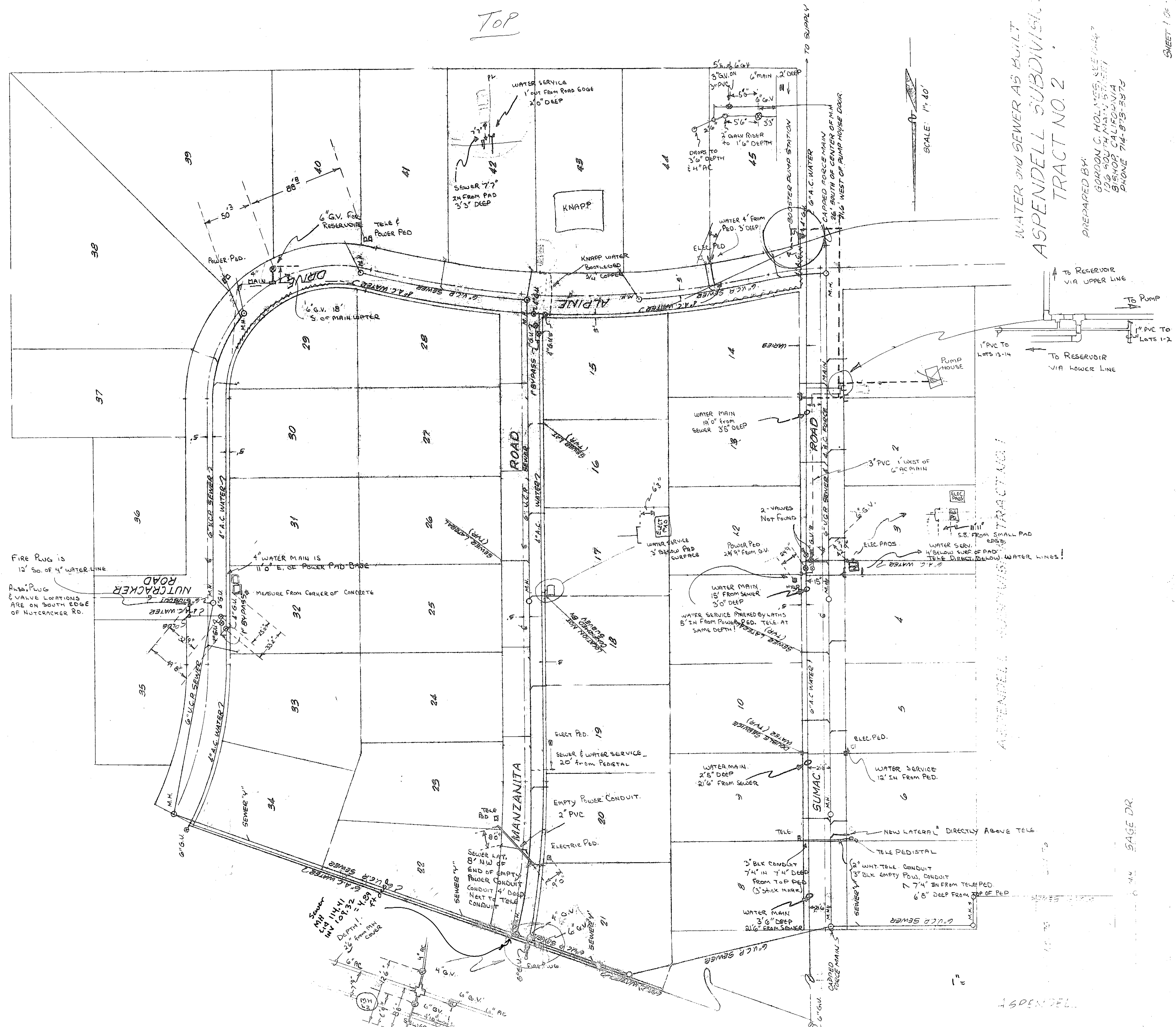
DRAFT
1-3-24

REVISIONS

Tim Rudolph ENGINEERING
438 Chestnut Ave
San Marcos, CA. 92069
760 798-4292
Tim.Rudolph@cox.net

Alpine Water Company
Aspendell CA
SYSTEM MAPS

TOP



WATER AND SEWER AS BUILT
 ASPENDELL SUBDIVISION
 TRACT NO. 2

PREPARED BY:
 GORDON C. HOLMES, SEE 10-147
 122 SOUTH MAIN STREET
 BISHOP, CALIFORNIA
 PHONE 714-875-5373

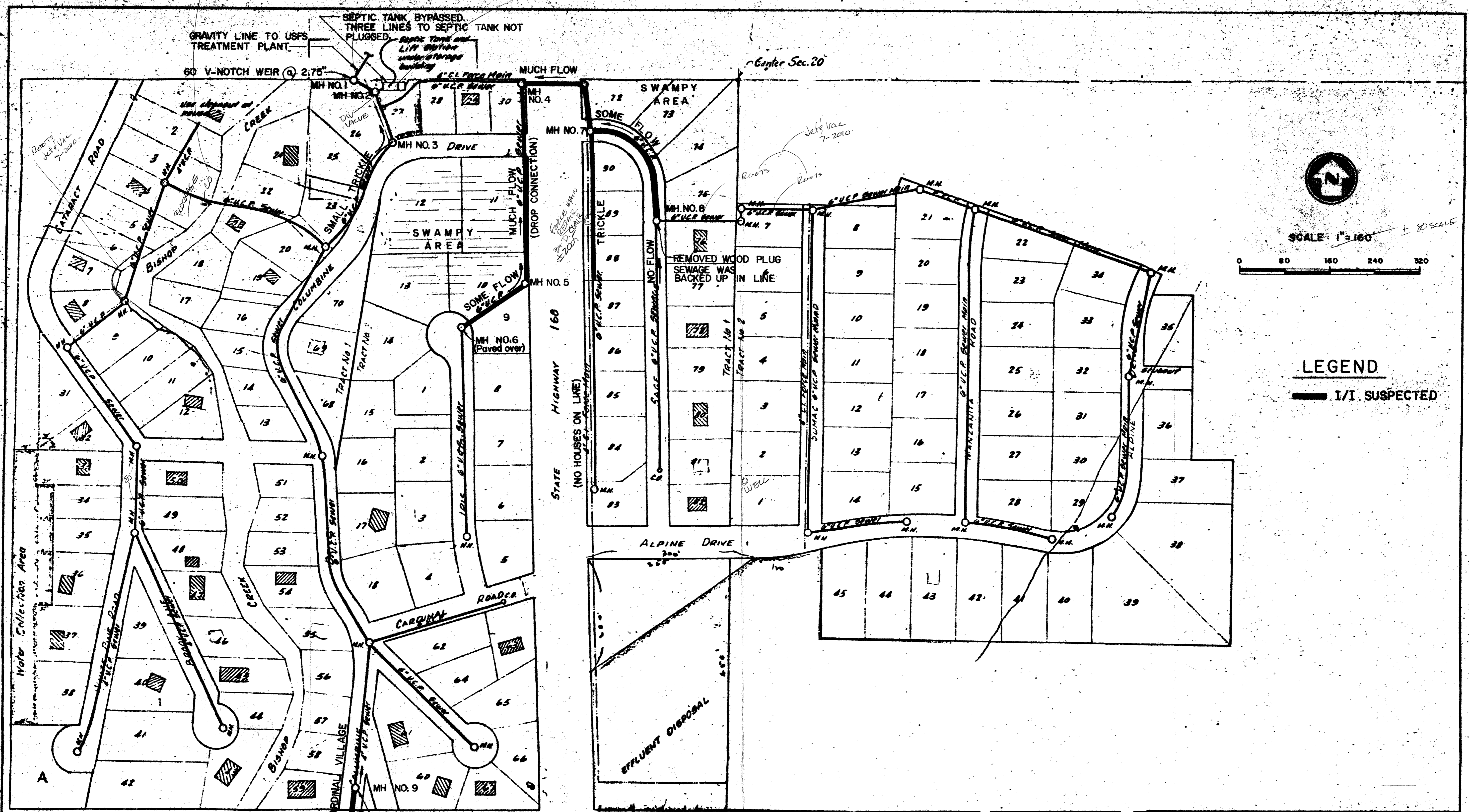
SHEET 1 OF 2

SCALE: 1" = 40'

ASPENDELL SUBDIVISION TRACT NO. 1

SAGE DR.

ASPENDELL



CSA NO. 2
 ASPENCELL I/I *
 NOVEMBER, 1977, SURVEY
 * INFILTRATION INFLOW