

Home owner

Shot off valves

7/23

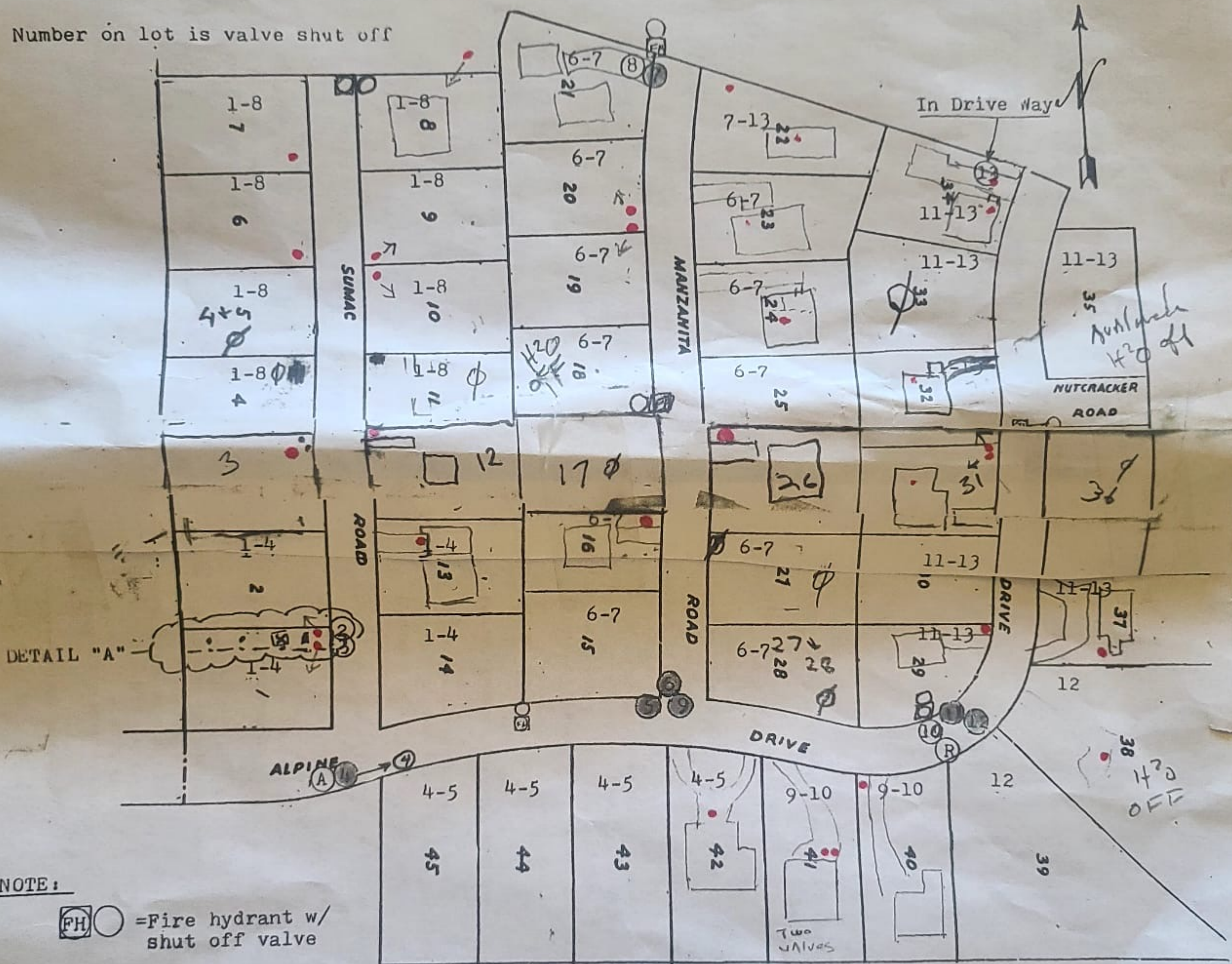
Aspendell SUBDIVISION

FOR ANY EMERGENCY CONTACT "ALPINE WATER CO"

TRACT NO. 2

APPROXIMATE LOCATION OF VALVES

Number on lot is valve shut off

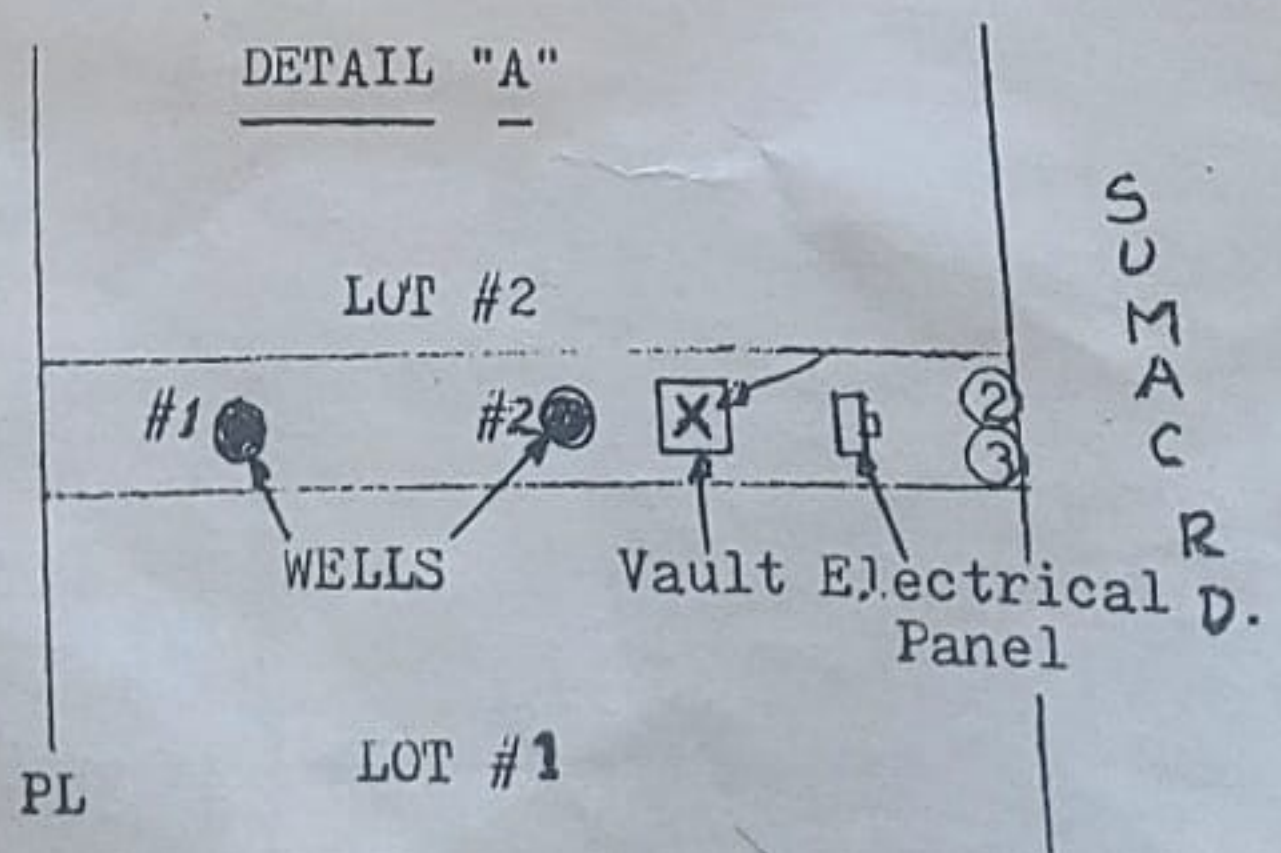
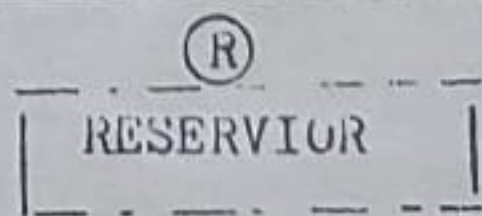


NOTE:

= Fire hydrant w/ shut off valve

SHUT OFF VALVES:

- | VALVES | LOT # |
|-----------|--|
| ● 1 4 ● | 1, 2, 13, 14 |
| ● 7 13 ○ | 22 |
| ● 1 8 ○ | 4, 5, 6, 7, 8, 9, 10, 11, 12 |
| ● 4 5 ● | 42, 43, 44, 45 |
| ● 6 7 ● | 15, 16, 17, 18, 19, 20, 21, 23, 24, 25, 26, 27, 28 |
| ● 9 10 ○ | 40, 41 |
| ● 12 ● | 38, 39 |
| ● 11 13 ○ | 29, 30, 31, 32, 33, 34, 35, 36, 37 |
| ● 7 13 ○ | For repairs work |
| R (R) | Shut off valves from reservoir to tract |
| X ○ | Shut off valve in vault |
| ● 2 3 ● | Isolation valve from wells to system |
| ● A-3 B ● | KEEP CLOSED AT ALL TIMES |



SUMAC ROAD

7/23

HOMEOWNER SHUT OFF VALVES

LOT	LOCATION	NOTES
1 and 2	paired together 29 1/2 feet from north east corner of house on lot one 52 degrees	
3	66° 41 feet from north east corner of the deck	there are three valve caps. This is the most Southwest one.
6	6 41 feet 103° from post on the south east corner of porch	white cap
7	38 feet from the south west corner of the deck 93°	white cap
8	22feet from north west corner of garage on lot 21. 147 degrees	under a piece of plywood.
9 and 10	paired together 240° from north west corner of deck of house on Lot 9 . 42 1/2 feet	black and white cap respectively
12	305° 38 feet from north west corner of house	garage has been an snow damaged valve in concrete box
13	from north west corner of garage follow west facing wall back south appx 2' to corner then 175° 51 inches from corner to valve in driveway	
16	42 feet from north east corner of garage 52°	
18	house has been abandoned for sometime water shut off	
19 and 20	located together 50 feet 93° from closest corner of porch on lot 20.	each valve in black pipe

22	38 inches 165° from center of railroad tie Post on north west corner of property	metal lid
23	said to be in south west corner of Garage	
24	under house	access thru door north side
26	34 feet from north west corner of garage 70°	green plastic cap. work is being done to change it
29	27 1/2 feet 74 degrees from north east corner of garage	garage is being converted into an apartment
31 and 32	paired together 35 1/2 feet from south east corner of porch on house lot 32 107°	red mental lids. Both also have turn off valves under house
34	37 1/2 feet 78 deg from ne corner of garage	also another valve under house thru basement door
41	3 feet from north east corner of garage 308 degrees	there are 2 valves in concrete. does on service lot 40?
42	6 feet from center of garage door 352 degrees	in concrete

To Do:

Lot 25 need to find valve

Lot 21 need to find valve

Lot 40 question whether valve is on lot 41 or in the street below lot 40

Lot 23 and 24 need to find valve have located valve under houses. have found a frozen valve between the 2 lots on street. don't know what it serves.

Lot 44 need to find valve